



Inclusion and Equity Professional Learning Programme

The Inclusion and Equity Professional Learning Programme is offered through partnership between Education Scotland and the South East Improvement Collaborative and will be available from November 2020 – March 2021.

The Covid-19 pandemic has brought inclusion and equity for all our children and young people into sharp focus and this digital programme uses five themes which focus on inclusion, equity, closing the poverty related attainment gap and raising attainment to support children and young people across the region.

Programme Aims

- To support children and young people's wellbeing, good mental health, and engagement.
- To increase the awareness and mitigate the inequitable effects of COVID 19, child poverty and barriers faced by children and young people across SEIC.
- To strengthen relationships across and within the SEIC Early Learning and Childcare/ school communities.

The 'live' SWAY version of this document and Signposting SWAYS will be updated throughout the programme. This version was created on 01.11.20

Programme Themes



1. Supporting children and young people’s wellbeing and engagement through and beyond the Covid 19 pandemic.

Go to page **4** to access information on the sessions and registration



2. Understanding poverty across the South East Improvement Collaborative.

Go to page **7** to access information on the sessions and registration



3. Respond and adapt to ensure inclusion and equity across the South East Improvement Collaborative.

Go to page **9** to access information on the sessions and registration



4. A National Perspective: Attainment Scotland Fund.

Go to page **13** to access information on the sessions and registration



5. Partnership and collaboration as a strategy for promoting inclusion and equity.

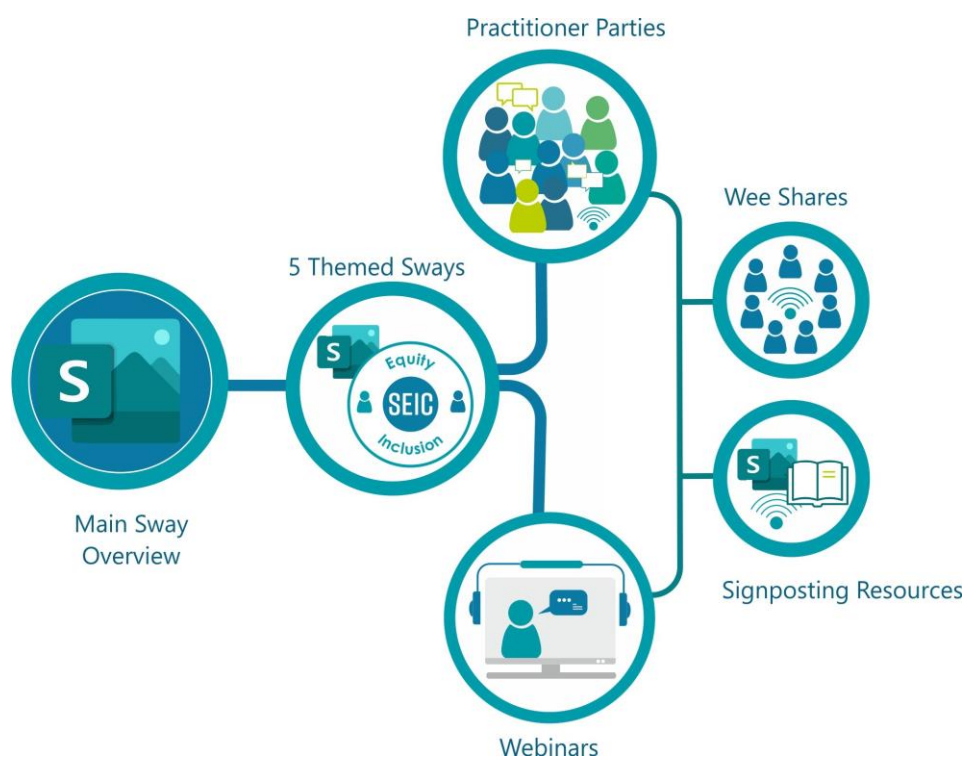
Go to page **15** to access information on the sessions and registration

Across the five themes there is something for every SEIC colleague.

Each session highlights the targeted audience:

All SEIC colleagues : Practitioners : Middle leaders : Senior leaders

Programme Structure



Webinars have been developed for each programme theme and are either recorded in full or have a short summary film. The webinars will be delivered by a combination of SEIC colleagues, Education Scotland or partner agencies sharing updates, interesting practice and current research findings to inform practice across the SEIC region.

Practitioner Parties and Wee Shares are a series of virtual conversations based around specific themes or questions and are hosted by and open to colleagues across the SEIC region and Education Scotland. These will not be recorded as they provide a safe space for you to connect and discuss issues with colleagues that are important to you.

- **Practitioner Parties** - larger groups aimed at providing an opportunity for all participants to engage in professional discussion, share and explore practice within the SEIC.
- **Wee Shares** – small groups providing opportunities for more in-depth dialogue.

Signposting Resources Each theme has a Sway signposting to relevant reflective questions, whole school approaches, further reading and resources.



Theme 1.

Supporting children and young people's wellbeing and engagement through and beyond the COVID 19 pandemic.



Inclusion and the impact of COVID - 19 - Practitioner Party

Monday 2nd November 2020 16:00 - 16:45

This session provides practitioners with opportunities to share their experiences and practice of supporting learners who require additional support through the COVID 19 pandemic. Examples will be collated and shared.

Audience - All

[Register here](#)



Inclusion and the impact of Covid-19 - Webinar

Wednesday 13th January - 16:00 - 17:00

The webinar aims to support practitioners with an introduction to the Inclusion Wellbeing and Equality context in Scotland and the expected rise in identification of ASN through Covid-19 pandemic.

Audience - All

[Register here](#)



Impact of COVID 19 on children & young people's health and wellbeing - mitigating the effects - Webinar

Monday 25th January 2021 - 16:00- 17:00

The session aims to provide an overview of current research on children's developing Health and Wellbeing and appropriate assessment approaches for health and wellbeing within the context of COVID 19, ASN and inclusion. Education Scotland colleagues will be joined by practitioners from two SEIC authorities who will share their experiences of using SEIC Health and Wellbeing self-evaluation resources.

Audience - Practitioners

[Register here](#)

LGBT History Month - Big Share February 2021

As part of the LGBT Month this Big Share provides an opportunity to promote LGBT inclusion work across our SEIC ELC/schools.

Audience - ALL



Planning effective transitions for children and young people with complex needs - Wee Share

Monday 8th March 2021 - 16:00 - 16:45

This session provides an opportunity to discuss the issues raised in your local context and in the national webinar and input from PAMIS

Audience: ASN practitioners supporting learners with severe and complex needs

[Register here](#)



Select ['here'](#) to access Theme 1 signposting, resources and information.

This SWAY will be updated, and additions made throughout the programme.



Theme 2 Understanding poverty across the South East Improvement Collaborative.



Poverty, equity and the poverty related attainment gap: Webinar

Monday 23rd November 2020 - 16:00 -17:00

The session aims to develop awareness of what poverty is, the causes, risk and the barriers it presents.

We will consider the role of educators in tackling closing the poverty related attainment gap.

Audience - Practitioners and Middle Leaders

[Register here](#)



Impact of poverty on children and young people's health and wellbeing - mitigating the effects: Webinar

Wednesday 9th December 2020 - 16:00 - 17:00

An overview of the impact of poverty on children's health and wellbeing taking a closer look at the impact of poverty on children's health and wellbeing across the South East Improvement Collaborative.

Audience - Practitioners

[Register here](#)



Tackling unconscious bias and gender stereotypes: Webinar

Wednesday 27th January 2021 - 16:00 - 17:00

Interactive session exploring the impacts of stereotyping and bias on children and young people. Providing a broad level of information to enable practitioners to reflect on practice.

Audience - Practitioners

[Register here](#)



Select ['here'](#) to access Theme 2 signposting, resources and information.

This SWAY will be updated, and additions made throughout the programme.



Theme 3

Respond and adapt to ensure inclusion and equity across the SEIC

Creative Conversations - Beyond Black Lives Matter - Big Share

Creative conversation catalysts - Jazz Ampaw Farr, Amjad Ali and Penny Rabiger will explore why we have reached the stage that we have, and why we need to state that Black Lives Matter. It then goes beyond this, looking at what we need to do to make it a reality in an educational context : what the implications are for education – what we teach, how we teach, how we recruit, who we promote and more.

No registration is needed to access this recorded presentation.

Select ['here'](#) to access the webinar.



Supporting all learners through inclusion - Webinar

Wednesday 4th November 2020

This session will provide an overview of the resources from the 2020 Dyslexia and Inclusive Practice Making Sense Programme which focused on supporting all learners through the inclusive dyslexia pedagogy. The session will highlight the use of self-evaluation/reflective resource developed to improve outcomes for all learners through inclusive practice.

Audience: All

[Register here](#)

Dyslexia Awareness Week - Monday 2nd - Sunday 8th November 2020

Promoting the work by Early Learning and childcare settings and schools across the South East Improvement Collaborative **No registration is needed to access the resources and information - Look out for the SEIC Tweets which will share practice across the SEIC.**



Inclusion and Blended Learning - Webinar

Tuesday 10th November 2020 - 16:00 - 17:00

The session provides an overview of Inclusion /ASN and how to support the development of accessible and differentiated blended learning and teaching resources.

Audience - Practitioners

[Register here](#)



Ensuring equity & inclusion: the importance of school culture and leadership: Webinar

Monday 16th November 2020 16:00 - 17:00

The session will cover the importance of school culture, ethos and relationships, the role of leadership for all in ensuring the needs of all learners are met.

Audience - All

[Register here](#)



Effective use of data for equity - Webinar

The session will raise awareness of the different types of data; using data for equity to identify gaps and plan for improvement.

This webinar will be available on two dates and also has a follow up 'Wee Share'.

Please select from the options below.

Thursday 19th November 2020 - 16:00 - 17:00

Webinar 1 - Audience - Practitioners - [Register here](#)

Wednesday 25th November 2020 - 16:00 - 17:00

Webinar 2 - Audience - School Senior Leaders - [Register here](#)

Monday 7th December 2020 - 16:00 - 17:00

Wee Share - Audience - All - [Register here](#)



Supporting learners through inclusion: Wee Share

Monday 1st February 2021 - 16:00 - 17:00

A follow up session to the webinar of the 4th November this Wee Share provides an opportunity to discuss the challenges of supporting learners who require additional support and to share what is working well.

Audience - Practitioners

[Register here](#)



Supporting Transitions for autistic Learners: Webinar

Wednesday 24th February 2021 - 16:00 - 17:00

This session will provide an overview of information and available resources which can support staff, autistic learners and their families when planning for a range of transitions.

Audience - All

[Register here](#)



Supporting Transition for autistic learners: Practitioner Party

Wednesday 3rd March 2021 - 16:00 - 17:00

A follow up session to the webinar of the 24th February 2021 this Practitioner Party provides an opportunity to discuss the approaches, information and resources shared in the webinar and also to have discussion to share approaches and practice, raise challenges experienced for supporting autistic learners across the SEIC.

Audience - All

[Register here](#)



Select ['here'](#) to access Theme 3 signposting, resources and information.

This SWAY will be updated, and additions made throughout the programme.



Theme 4

A National Perspective: Attainment Scotland Fund.



Digital equity: Tackling rural challenges through a digital strategy - Practitioner Party

Monday 14th December 2020: 16:0 - 17:00

The session will take a closer look at the implications and challenges of rurality across the SEIC and how to maximise digital resources for equity.

Audience: All

[Register here](#)



Closing the poverty related attainment gap in your context with the SEIC - Webinar

Monday 18th January 2021 16:0 - 17:00

This session will share examples of small spend Pupil Equity Funding.

Audience: Middle and Senior Leaders

[Register here](#)



Select ['here'](#) to access Theme 4 signposting, resources and information.

This SWAY will be updated, and additions made throughout the programme.



Theme 5

Partnership and collaboration as a strategy for promoting inclusion and equity.



Youth Work and supporting transitions: Wee Share

Wednesday 25th November 2020 - 16:00 -17:00

Discussion about the role of youth work organisations as partners in the planning, delivery and evaluation of enhanced transition support for young people. This session will offer examples from practice from Lothian and the Borders areas and will focus on youth work partnerships which are community-based.

Audience - School Middle and Senior leaders and Attainment Advisors

[Register here](#)



Youth Work and the poverty related attainment gap: Wee Share

Tuesday 1st December 2020 - 16:00 -17:00

This session will set out challenges and offer opportunities and solutions for youth work and school partnerships to close the poverty-related attainment gap. The session will offer examples from practice from Lothian and Borders area and will focus on youth work partnerships which are community-based.

Audience - School Middle and Senior leaders and Attainment Advisors

[Register here](#)



Listening to parents' experiences of COVID-19: Stressors and opportunities for engagement: Practitioner Party

Monday 11th January 2021 - 16:00 -17:00

The session will hear the experiences of parents during COVID -19 and look to opportunities to build engagement and relationships.

Audience - All

[Register here](#)



Challenges of effective collaboration for inclusion and equity: Wee Share

Monday 22nd February 2021 - 16:00 -17:00

Discussion to identify creative approaches to overcome regional needs and challenges around equity and inclusion.

Audience: Senior leaders

[Register here](#)



Select '[here](#)' to access Theme 5 signposting, resources and information.

This SWAY will be updated, and additions made throughout the programme.