

East Lothian Council Outdoor Learning



Outdoor Learning's 'Teacher in Residence' programme 2020-21

The OL Service are changing the way they work this year; focusing on longer-term school-grounds/local area curricular OL support for our schools. A move from 'classroom' to 'learning spaces' model for CfE can deliver high quality learning and teaching beyond the classroom. In the new world of physical distancing the potential for the outdoor learning space is even greater. Our mission is to enable every school in East Lothian to realise the benefits of the outdoor learning space to deliver the CfE.

The Outdoor Learning Service will provide your school with:

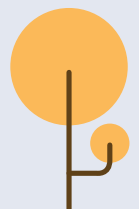
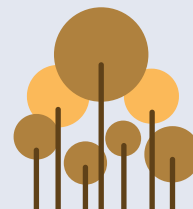
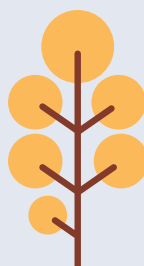
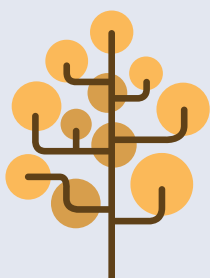
- An Outdoor Learning teacher based in your school for a number of days per week over an extended period of weeks/months, extent and duration to be agreed with senior management.
- Teaching Outdoors to whole classes in the school grounds, or local area if appropriate.
- Outdoor Learning lessons will have a curricular focus; complementing the classroom based learning
- Lesson plans will be agreed with class teacher(s) but prepared by the Outdoor Learning teacher
- Increased OL confidence/experience/knowledge for school staff via co-teaching and professional learning

In return we would ask that the school:

- Support us to work closely with class-teacher(s) to both define content, and to co-teach lessons.
- Add direct measurable references to Outdoor Learning to your school's improvement plan; if not currently there.
- Support the sharing of case-studies, lesson plans, resources and appropriate use of social media.
- Make a commitment to ongoing Outdoor Learning lessons and OL staff development

Want to do more learning outside?

If your school is excited about and committed to the potential of outdoor learning, not just for this year's education recovery but the long term? Contact us at outdoorlearning@elcschool.org.uk so we can support you.



East Lothian Council Outdoor Learning Service

outdoorlearning@elcschool.org.uk
www.eastlothian.gov.uk/outdoorlearning

@ELoutdoored

@ELCoutdoorlearning