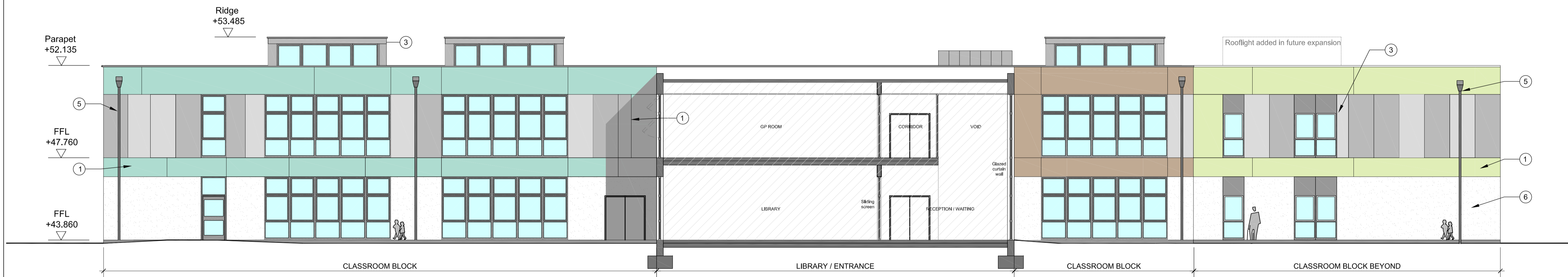
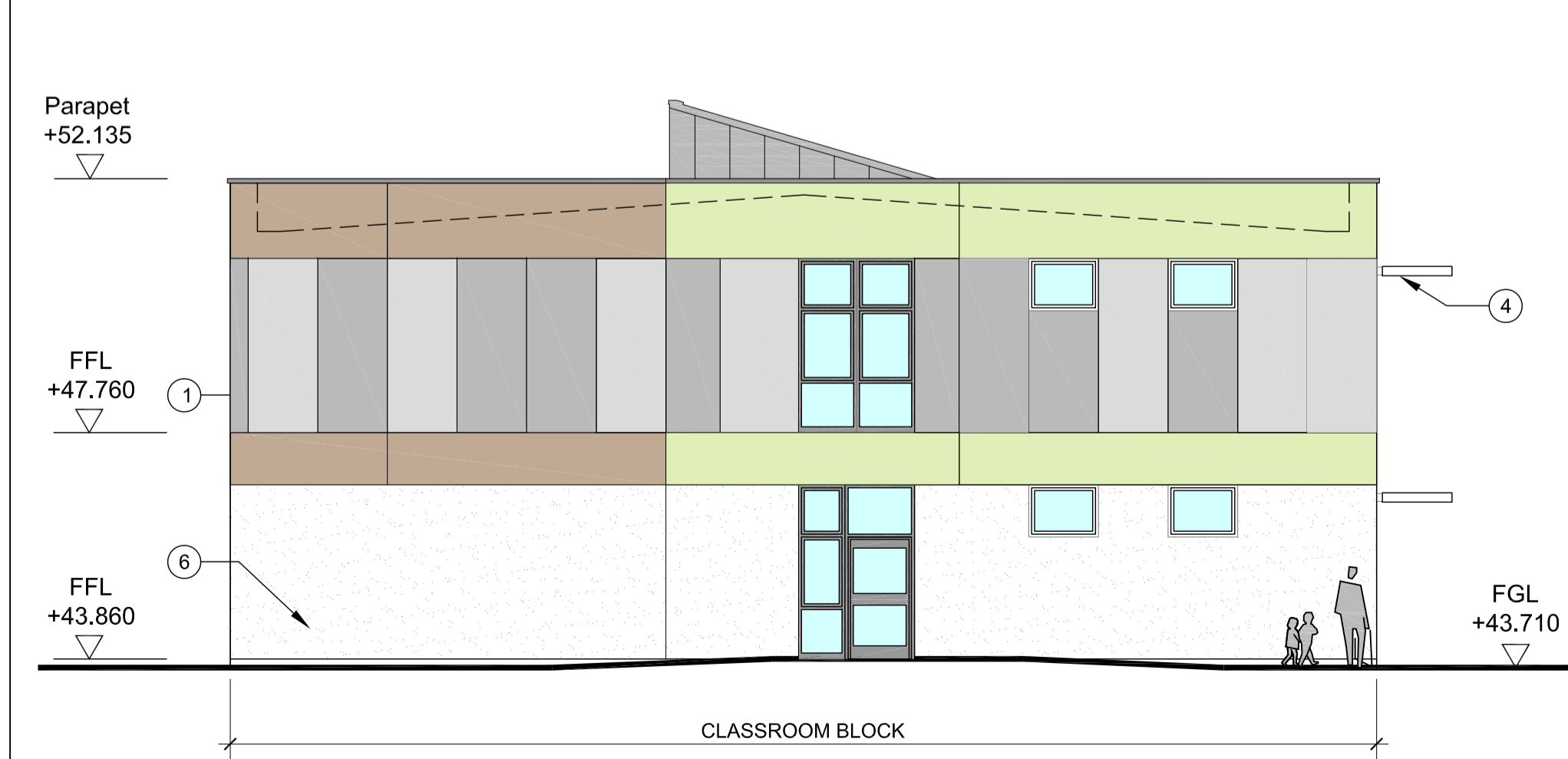


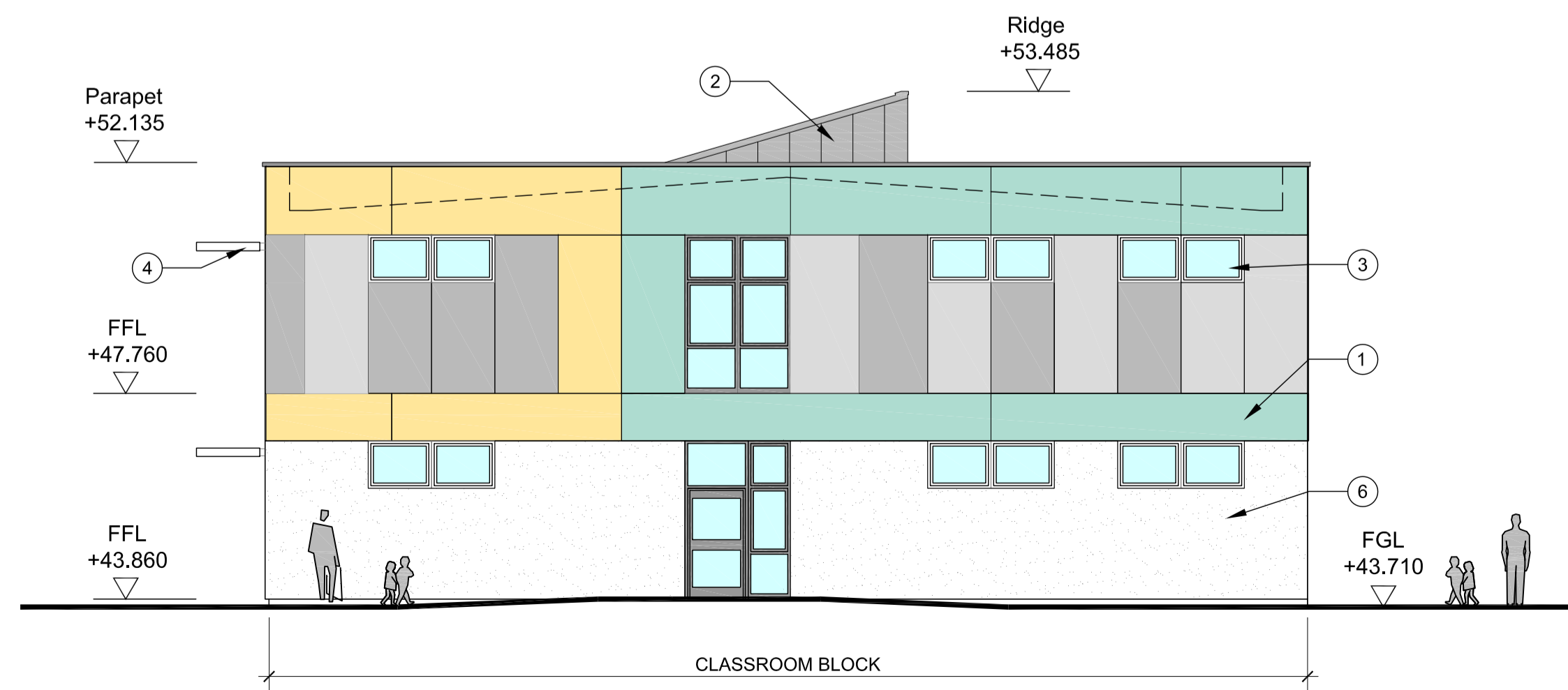
Elevation A
Scale: 1:100



Elevation B
Scale: 1:100



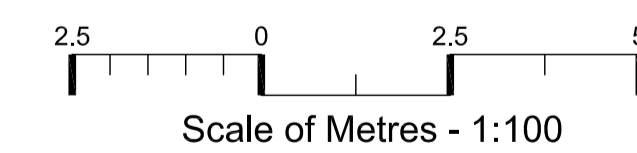
Elevation C
Scale: 1:100



Elevation D
Scale: 1:100


Material key:

- ① Coloured rain-screen cladding panels
- ② Metal standing seam roof
- ③ Aluminium windows
- ④ Aluminium brise soleil louvres
- ⑤ Aluminium rain water goods
- ⑥ Render to match existing
- ⑦ Brick - Facing
- ⑧ Brick - Glazed (white)
- ⑨ Translucent panels



Planning

Revision	Date	By
A	2.08.15	JS

PROJECT Law primary School Extension		DRAWING Elevations Sheet 1	
 East Lothian Council COMMUNITY HOUSING & PROPERTY MANAGEMENT		SCALE 1:100 At A1 At A3	PROJECT NO ED 404 DRG NO L(03)001
DRAWN <i>JS</i>	CHECKED 	DATE 10.14	ASSET No. STAGE REVISION A
Penston House Macmerry Industrial Estate EH33 1EX Telephone 01620 827827 Fax 01620 827437			