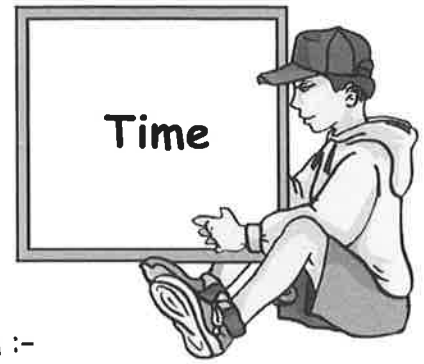


CHAPTER 4




Exercise 1

- Write down each of the following times using am and pm :-
 - half past seven in the evening
 - ten to nine at night
 - quarter to five in the afternoon
 - twenty five minutes after midnight
 - eleven minutes before midnight
 - twenty past six in the evening
 - two minutes past one in the morning
 - five minutes to ten at night
 - start of morning school interval
 - end of school lunch time.
- Laura left for the supermarket at ten to eleven in the morning and returned home at twenty five to three in the afternoon.
Write these times using am and pm.



Exercise 2

- Change the following 12 hour clock times to 24 hour clock times :-
 - 9.50 am
 - 7.00 pm
 - 4.15 pm
 - 8.55 am
 - 11.20 pm
 - 10.55 am
 - 10.58 pm
 - 3.02 am
 - 4.46 am
 - 5.18 pm
 - 11.01 pm
 - noon
- Change the following 24 hour clock times to 12 hour clock times (am and pm) :-
 - 0430
 - 1145
 - 1520
 - 1450
 - 0005
 - 1209
 - 1356
 - 1932
 - 1707
 - 0559
 - 2311
 - noon.
- On a Friday evening, this cinema opens at 8.55 pm and closes at 2.10 am on the Saturday.
Write both of these times in 24 hour form.
- Every Saturday at 2148, flight TOM895 leaves Sharm El Sheikh and arrives in Glasgow at 0351 on the Sunday.
 - Write these times in 12 hour form.
 - Find out where Sharm El Sheikh is.



Exercise 3

1. How long is it from :-

- | | |
|-----------------------|-----------------------------|
| a 4.05 pm to 9.05 pm | b 11.00 am to 1.30 pm |
| c midday to 7.30 pm | d 6.30 pm to 10.45 pm |
| e 8.55 am to 10.25 am | f 0720 to 1155 |
| g 1750 to 2115 | h 2155 to 0200 (next day) ? |

2.



Heather left on her holidays, deciding to go along the country roads. She set off at 10.45 am and arrived at her holiday hotel at 5 minutes to 5 the same day.

For how long had she been on the road ?

3. A tennis match began at 1135 and lasted for 1 hour 55 minutes.

When (24 hr time) did it finish ?



4. Shown is part of the rail timetable from Bilton to Kenbank.



	Bilton	Lowton	Sloan	Henton	Kenbank
Early Train	6.15 am	7.25 am	9.35 am	10.20 am	1.05 pm
Late Train	12.10 pm	1.20 pm			7.00 pm

a How long does the early train take to travel from :-

- (i) Bilton to Lowton (ii) Sloan to Henton (iii) Bilton to Kenbank ?

b Assuming that the late train travels at the same speed as the early train, when would it be expected to arrive at :-

- (i) Sloan (ii) Henton ?

5. Two sisters challenged each other as to who could do their Christmas shopping in the shortest possible time. Doris started her shopping at 0935 and finished at 1105. Eleanor was out shopping from 1440 until 1615.

Who was quicker and by how much ?



Exercise 4

Here is part of a train timetable.

Lomond	1020	1210	1425	1705	2110
Whiteinch	1053	1243	1458	----	2143
Coatbridge	1124	----	1529	----	2218
Livingston	1142	1332	1547	----	2300
Musselburgh	1219	1359	1614	1820	2331

- At what time does the train leaving from Lomond at 1425 arrive in Musselburgh ?
- At what time does the 1210 Lomond train arrive in Livingston ?
- How long does the 1142 Livingston train take to reach Musselburgh ?
- Jenny arrives in Coatbridge station at quarter past three. How long does she have to wait for a train to Musselburgh ?
- If Jenny takes that train, at what time will she reach Musselburgh ?
- It takes Billy 20 minutes to walk from his aunt's house in Whiteinch to the station.
If he wants to catch the 1053 to go home to Livingston, what is the latest time he can leave his aunt's ?



Exercise 5

- What is the 3rd month of the year ?
 - What is the tenth month of the year ?
 - Which month comes just before August ?
 - Which month comes just after September ?
- How many days are there in the month of :-
 - February
 - August
 - November
 - December ?
- Write each of these dates using 6 digits :- e.g. 03/01/14 is 3rd January 2014.
 - 5th April 2013
 - 17th June 2014
 - 30th November 2020.
- Including both dates, how many days are there from :-
 - 5th of July till 23rd of July
 - 28th May till 9th of June
 - 20/09/15 till 10/10/15
 - 1/07/14 till 1/09/14 ?



Exercise 6

1. Change each of these to **minutes** and **seconds** :-

- | | | |
|------------|-------------|----------------|
| a 70 secs | b 150 secs | c 200 secs |
| d 300 secs | e 1210 secs | f 12 005 secs. |

2. Change each of these to **hours** and **minutes** :-

- | | | |
|------------|-------------|--------------|
| a 90 mins | b 130 mins | c 265 mins |
| d 420 mins | e 1830 mins | f 3000 mins. |

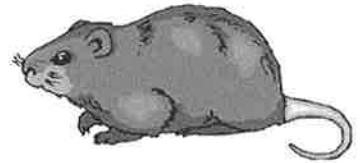
3. Copy the following and complete :-

- | | | |
|---|--|---|
| a 3 mins 10 secs
<u>+ 5 mins 25 secs</u> | b 6 mins 40 secs
<u>+ 1 min 40 secs</u> | c 7 mins 35 secs
<u>+ 3 mins 55 secs</u> |
| d 7 mins 50 secs
<u>- 2 mins 35 secs</u> | e 9 mins 05 secs
<u>- 4 min 50 secs</u> | f 2 mins 30 secs
<u>- 1 min 40 secs</u> |

4. Over the past 3 nights, Tracy made a note of how long her pet hamster spent on its exercise wheel.

How long was that altogether ?

3 mins 35 secs,
2 mins 55 secs,
4 mins 25 secs.



Revision Exercise

1. Change these times to **24 hour format** :-

- | | | | |
|-----------|-----------|-----------|-----------------------|
| a 6.45 am | b 7.05 pm | c 9.32 pm | d half past midnight. |
|-----------|-----------|-----------|-----------------------|



2. Write the following in **12 hour format** :- (remember to use **am** or **pm**)

- | | | | |
|--------|--------|--------|---------|
| a 0735 | b 1740 | c 1051 | d 2253. |
|--------|--------|--------|---------|

3. TeeJay's van set off at 0735 to make a delivery in Inverness.

If the driver got back at 1315 how long had he been away for ?



4.



A paper boy started his deliveries at 25 to 8 in the morning.
It took him 55 minutes to complete his round.

At what time did he finish ?

5. Amy spends two days a week taking elderly people for their messages in her bus. The pick-up times for both days are shown in the table.

	Home	Mrs Peters	Mr Davis	Miss Dykes	Mr/Mrs Speirs	Miss Ramage	Shop
Monday	0950	1000	1012	1025	1032	1057	1115
Thursday	1315	1325	1337				

- a How long does it take Amy to go from her house to Mr Davis' ?
- b How long does Miss Dykes spend on the bus ?
- c Assuming both trips take the same time, at what time does the afternoon trip reach the shops ?



6. a How many days are there in :- (i) November (ii) May ?
- b Including both dates, how many days from 23rd of September to 6th of October ?

7. Charity ran a race in 7 minutes and 12 seconds.
Megan ran it in 6 minutes and 47 seconds.

- a Who won and by how many seconds ?
- b What was their combined time ?



8. Egyptian time is 1 hour ahead of British time.
Lenny flew from Prestwick to Cairo at 2045 last Tuesday.
If the flight took 5 hours 25 minutes, at what time (Cairo time)
and on what day did he arrive at Cairo Airport ?

