

CHAPTER 13d



Exercise 1



1. Put these objects in order of weight, starting with the lightest :-



eraser



motorbike



packet of crisps



sack of potatoes



chocolate bar

2. Write these weights in grams :-

a 8 kg

b 36 kg

c 2 kg 500 g

d 7 kg 846 g

e 9 kg 42 g

f 12 kg 58 g

g 26 kg 70 g

h 13 kg 4 g

i 6 kg 6 g.

3. Change these gram weights to kilograms - OR - to kilograms AND grams :-

a 7000 g

b 50 000 g

c 4800 g

d 13 100 g

e 5432 g

f 8230 g

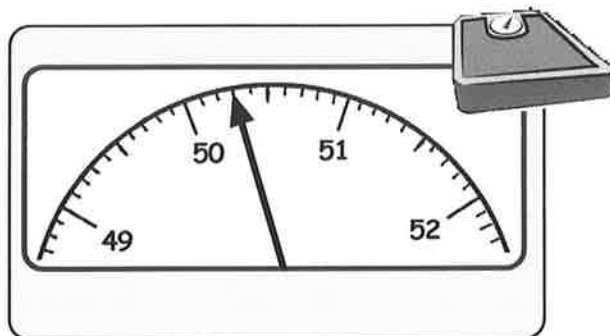
g 2001 g

h 7060 g

i 2012 g.

Exercise 2

1.



Write down the reading on the bathroom scales :-

a in kilograms

b in grams.

2. Daisy picked **three and a half kilograms** of blueberries to bake a pie. She set aside **1 kg 250 grams** of the blueberries to make jam.

a How many **grams** of blueberries did Daisy buy ?

b How many grams of blueberries were actually used in baking the pie ?



3.



Mr Tomley bought two bottles of sauce from the corner shop. Each bottle weighed 725 grams.

- a What is the **total** weight of the bottles, in grams ?
- b What is their **total** weight in kilograms ?

4. Jessie bought 3 lots of cheese.

Their **total weight** came to 2 kg 350 g.

The Stilton weighed 875 grams and the Cheddar weighed 850 grams.

What weight of Parmesan did Jessie buy ?



Revision Exercise

1. List these farm animals in order, starting with the one that you think weighs **least**.
cow - hen - bull - sheep - cockerel.

2. Change from **kilograms** to **grams** :-

- a 9 kg
- b 17.3 kg
- c 82 kg
- d 2 kg 600 g
- e 8 kg 31 g
- f 24 kg 9 g.



3. Change these weights to **kilograms** - OR - to **kilograms and grams** :-

- a 5000 g
- b 20 000 g
- c 5200 g
- d 2007 g
- e 9030 g
- f 10 003 g.

4.



Dana and her friend Jaki weigh themselves on a set of scales. Dana weighs 47 and a quarter kilograms. Jaki weighs 50.4 kg. How much **less** does Dana weigh than Jaki, in grams ?

5.



This box, containing 3 tins of soup, 2 jars of gherkins and 6 pot noodles, was delivered to Mr Fyvie.

If a tin of soup weighs 400 grams, a jar of gherkins 350 grams, a pot noodle 50 grams and the box itself weighs 210 grams, what is the **total** weight of the box and its contents ?