

MEET THE TEACHER

Curriculum Presentation for P2/3



GENERAL INFORMATION



- Absences: Contact school before 9:30am
- Always bring coat to school
- Please label all clothing!
- Please continue to engage in all correspondence relating to school matters, such as newsletters, emails and notes home
- Please continue to be mindful of our school guidelines around Coronavirus in order to continue making our school a safe environment

CLASS LAYOUT



All children have set labelled stations (desk and chair) in the classroom. They are encouraged as far as possible to stay at their station during lessons, while eating lunch and during wet breaks.

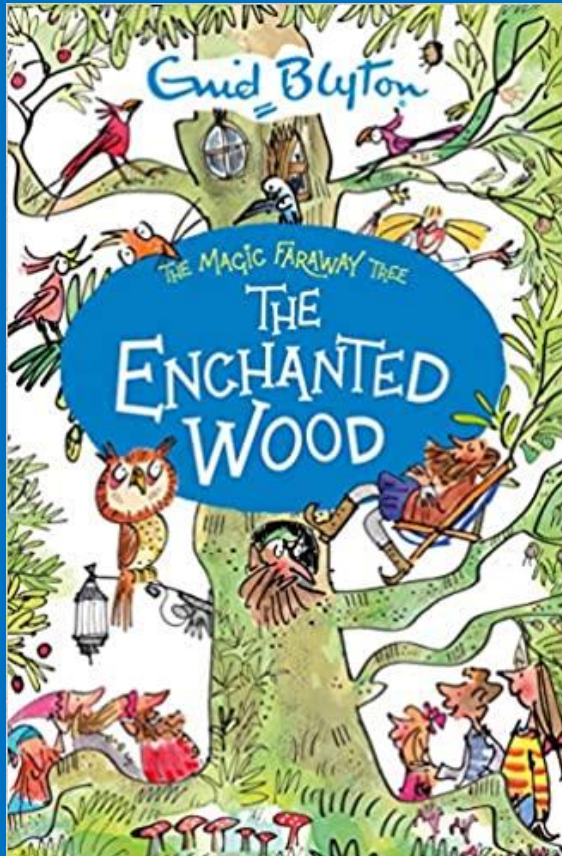
Every child has their own labelled pencil pot with the necessary stationary on their desk to avoid sharing where possible. Individual pupil drawers for jotters, white boards and other individual resources.

Topic and class work are displayed using our Learning Walls to promote our learning so far.

CROSS – CURRICULAR LEARNING



First Topic:



Cross curricular learning has been a key focus during our novel study of The Enchanted Wood this term.

TOPIC WORK: THE ENCHANTED WOOD



In **Literacy** our focus has been Imaginative Writing. The children have explored in their writing how it would feel to walk in the Enchanted Wood. We have also focused on character descriptions and written letters to 'Silky' (the fairy from the Enchanted Wood)

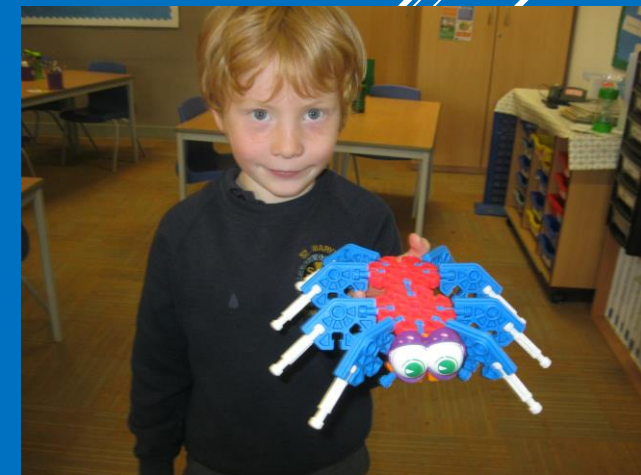
In **Maths** our focus has been on measure. The children have been learning outdoors measuring trees and creating rain gauges.

In **Technologies** we have used the internet to research topic focused activities and will applying engineering skills to design and create models.

In our **Science** learning P2/3 are beginning to look at biodiversity and interdependence.

Expressive Arts: drawing and using mix media to create pictures of The Enchanted Wood.

Play is incorporated throughout our timetable, this gives children the opportunity explore their imagination.

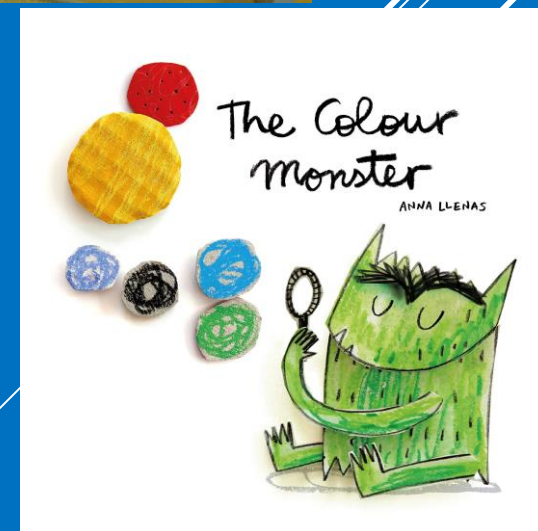




HEALTH AND WELLBEING

In Health and Wellbeing we have been focusing on friendships as well as discussing and sharing our feelings. As a class we have read *The Colour Monster*. The children are encouraged to share how they are feeling every morning using our Emotion Checker. The class are having opportunities with our PE specialist to be active and develop movement skills.

We have looked at the visions and values of St Mary's and are encouraging the children to be respectful and responsible.



NUMERACY

In P2/3 we are focusing on Active Numeracy. We have spent a lot of time as a whole class counting forwards and backwards and now consolidating our knowledge of skip counting in 2,3,5 and 10s.



Maths

In Maths the children have been learning about measure in different contexts for length and height. They have measured the heights of classmates and recorded them in m and cm, have estimated the lengths of classroom objects using non-standard units of measurement and have confirmed them using m and cm.

The children created a rain gauge with their group which has been left in the school courtyard and they will return to check how many cm of rain has fallen. This learning will then lead on to measuring the capacity of different objects.

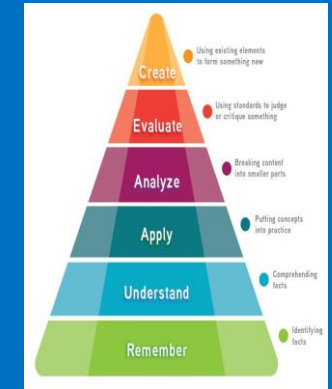


LITERACY

Reading

Children read in Core Reading groups three times a week which is led by the class teacher and other school staff. Discussion, prediction, understanding of vocabulary and fluency skills are a main focus.

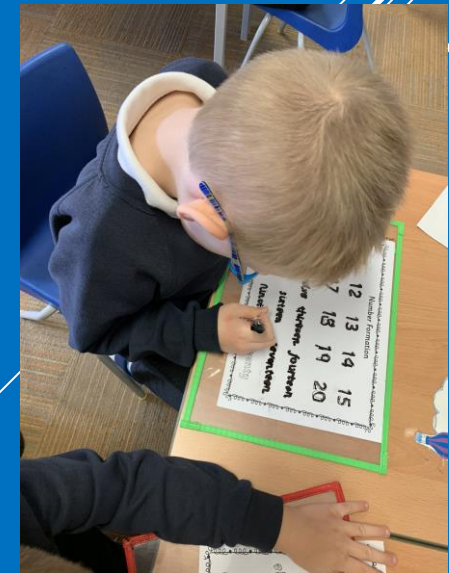
Children are assessed on their understanding of the text using Blooms Questions



Handwriting

Handwriting is a transferable skill that can be carried on to jotter work and writing lessons.

Handwriting is practiced twice a week. During these lessons letter formation and neatness are encouraged and praised.

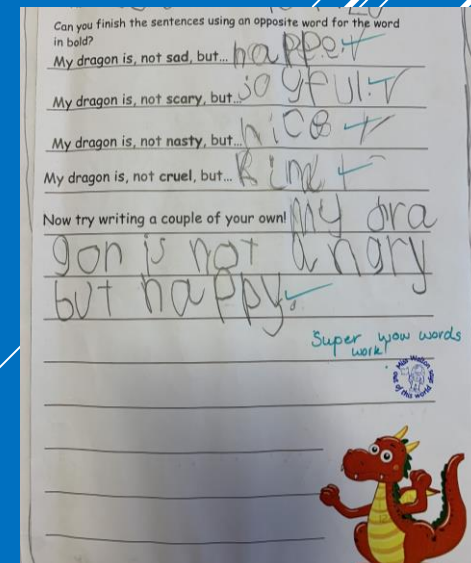
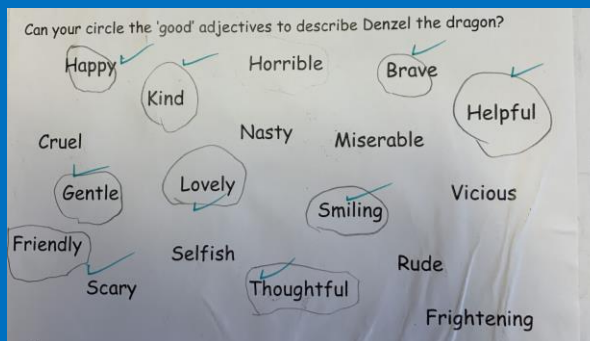
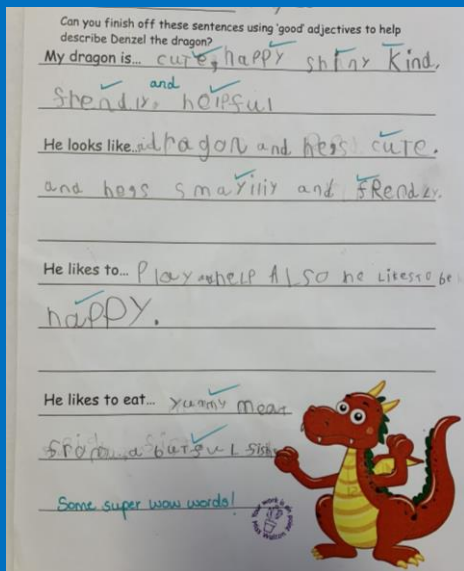




Big Writing

As an introduction to First Level P2 are focusing on using visuals to support writing independently. Continuing their learning from last year, P3 are now working towards being more confident in writing independently.

All children are encouraged to develop their use of language and tools for writing in their work. These are taught and learnt through spelling, grammar, handwriting and VCOP lessons.

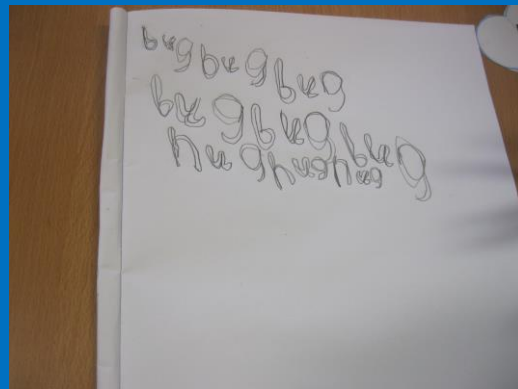


LITERACY – SPELLING AND GRAMMAR



The children work in differentiated spelling groups. New spelling words are introduced on Mondays. The children then complete different active spelling tasks on Tuesdays and Wednesdays. The words are then assessed on Friday mornings.

Children are working through the Jolly grammar programme. Each week they are building their knowledge of punctuation and parts of language eg. nouns, adjectives and verbs.



PUPIL ASSESSMENT FOLDERS



This year pupils will continue to have a Pupil Assessment Folder that will be sent home at different times of the year so pupils can engage in conversations with adults at home about their learning. It will continue to detail and assess some activities pupils are doing in class as well as examples of their work from across the different curricular areas. It is a valuable form of assessment for teacher and pupil alike, by including a 'teacher's voice' and a 'pupil voice' through comments and pictures. It should continue to be signed and acknowledged by parents when brought home as a way of making the school/home link more transparent.

THANK YOU



- Thank you for taking the time to read through this introduction into life in the P2/3 classroom. In all aspects of learning here in St. Mary's, the importance of maintaining high standards is vital and as such your continued support from home would be greatly appreciated
- If you would ever like to discuss any queries or if you had any questions about your child's learning, please don't hesitate to get in touch with the school or speak to us in person