

Musselburgh Cluster Area Early Years Profile



Introduction

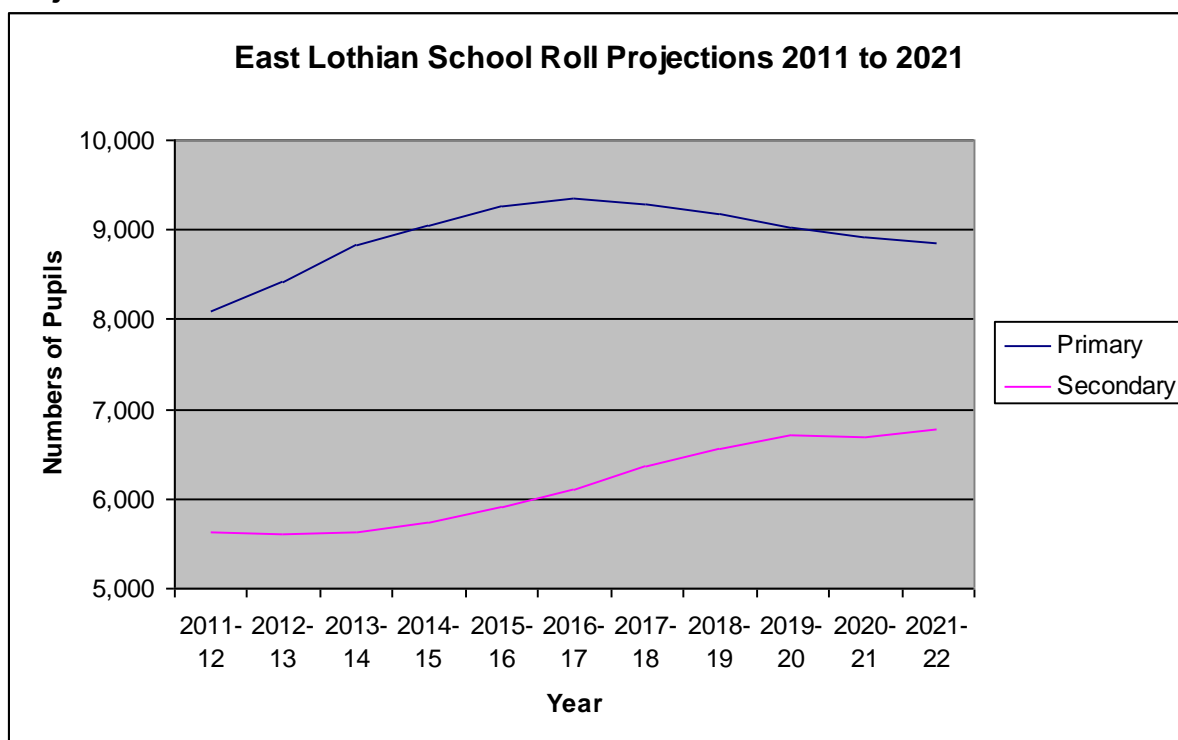
Over the last two years a group of service and community champions for Support from the Start have developed a wide range of initiatives and programmes aimed at improving health and social equality through a focus on children's early years – pre birth to 8 years of age. This approach has evaluated positively ([Healthy Happy Bairns](#)) and a second phase for Support from the Start has been agreed by East Lothian community planning partners. A key part of the phase two approach is the development of local 'champions' or 'link up' groups in each of the school clusters. A fuller description of the proposed champions groups can be found [here](#) but in short they will bring together key people from the community and local services to focus on action to improve chances for children pre birth to 8. Each group will have a link to the Support from the Start planning board and a small development fund has been agreed for the group's use.

Musselburgh Cluster Area Overview

Musselburgh and its surrounding areas are situated at the western end of East Lothian close to Edinburgh. It includes the settlements of Musselburgh, Wallyford, Whitecraig, Carberry, and Old Craighall. The area has one secondary school, seven primary schools, most with attached nursery classes, one dedicated nursery school and one child and family centre. It has a population of 23,096 (www.sns.gov.uk). This is some 24% of the population of East Lothian as a whole.

Although across East Lothian as a whole the population is growing, with a growth rate of 7% since 2001 this has not been the case in Musselburgh. Since 2001 the population in the Musselburgh West ward has dropped by 5% while in Musselburgh East it has grown by 2%. Overall for the Musselburgh Cluster the population has decreased by 1%. However the population is expected to increase over the next ten years as a result of new house building and other factors. This is illustrated in the school roll figures projected below.

Projected School Rolls 2011 to 2021¹



The age distribution of Musselburgh is broadly similar to East Lothian. However in Musselburgh West there are fewer children (aged 0-15) than there are across East Lothian as a whole and there is considerable variation within ward areas. For example, in Whitecraig 23% of the population are children and only 17% are of pensionable age.

Population age composition²

	Musselburgh East	Musselburgh West	Musselburgh total	East Lothian
% of the population are children & young people	20%	17%	19%	20%
% of the population are of working age (16-74)	61%	63%	62%	60%
% of the population are of pensionable age	19%	20%	19%	21%

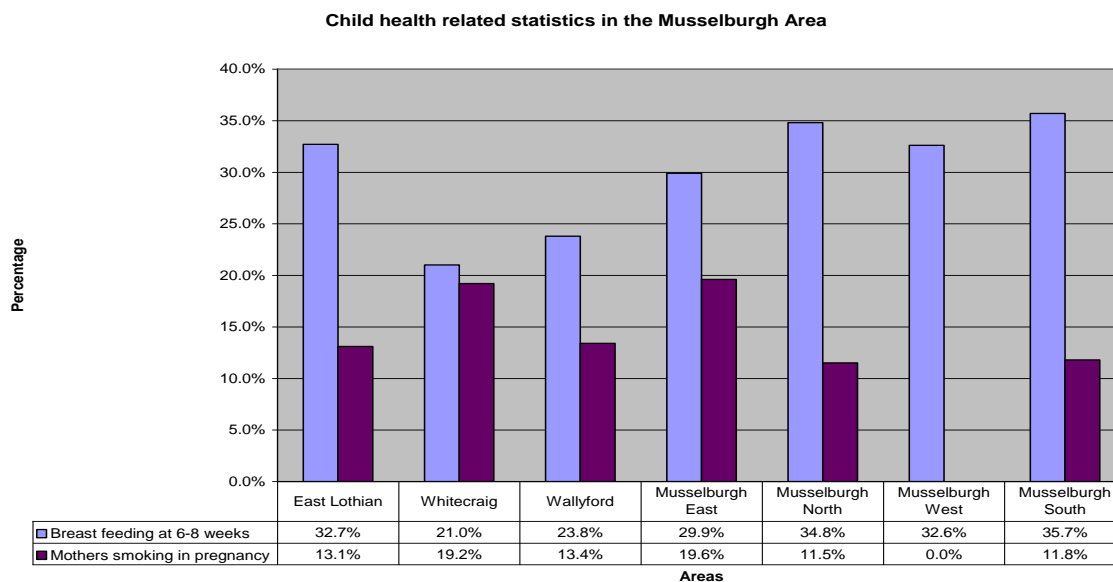
¹ East Lothian Council Education Department

² www.sns.gov.uk

Health

Health and deprivation varies considerably across the cluster area. While most of Musselburgh is on a par with East Lothian as a whole in relation to breastfeeding rates and rates of smoking in pregnancy there are far fewer women who breastfeed in Whitecraig and Wallyford than elsewhere and there more women smoking in pregnancy in Whitecraig and Musselburgh East.

Breastfeeding and maternal smoking in pregnancy ³

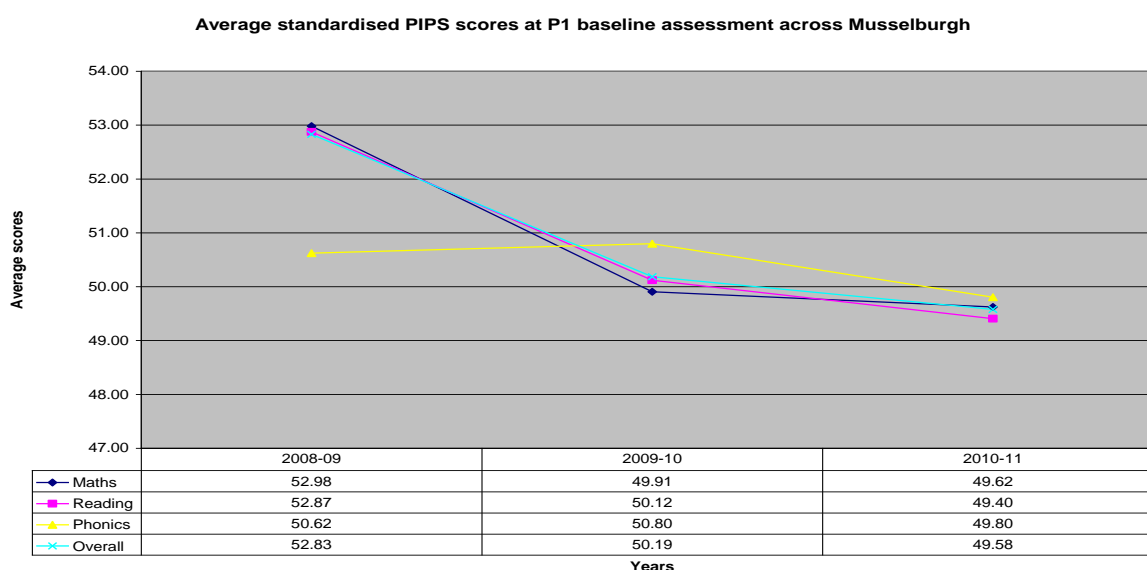


East Lothian Health & Wellbeing Profile 2010 ([Scottish Public Health Observatory](#))

Education

In primary one the standard assessment used to measure the abilities of new pupils in reading, writing and arithmetic show a slight decline in recent years.

Average standardised PIPS scores at P1 baseline assessment ⁴



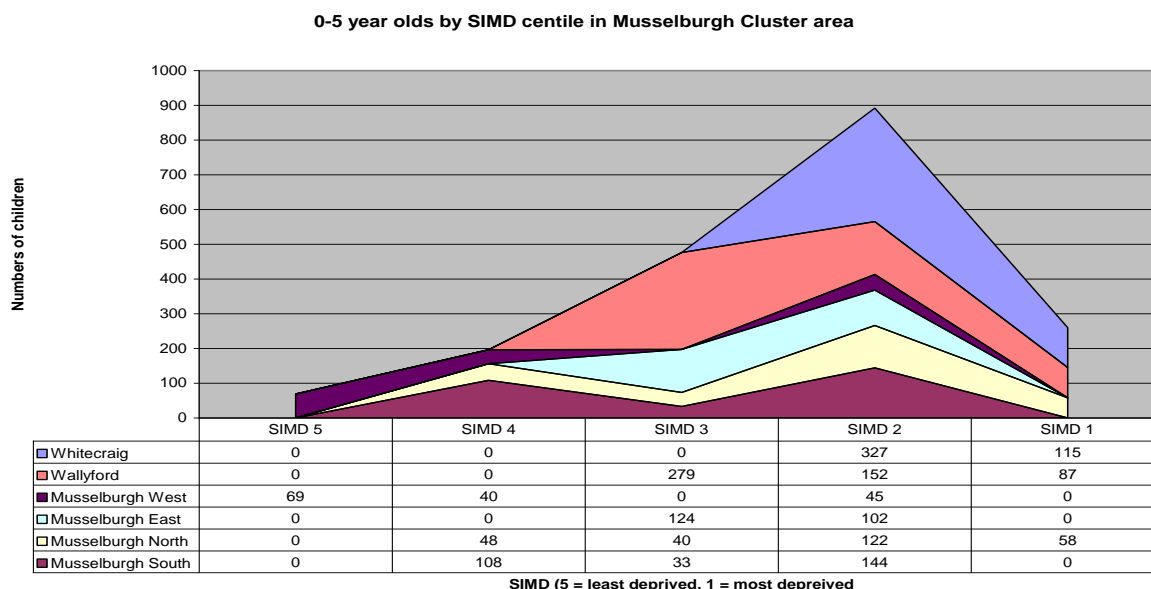
³ East Lothian Health & Wellbeing Profile 2010 ([Scottish Public Health Observatory](#))

⁴ East Lothian Council Education Department

Equality

Levels of deprivation vary widely within the Musselburgh cluster area too. Wallyford and Whitecraig have many more children in homes from the most deprived Scottish Index of Multiple Deprivation (SIMD)⁵ areas than any other communities in Musselburgh.

Children aged 0-5 years by SIMD quintile in Musselburgh Cluster⁶



Given its population the Musselburgh area has higher than expected levels of free school meal entitlement, looked after pupils (at home), pupils with disability, social work referrals and children on the child protection register.

Children and Young People Facts & Figures⁷

	Musselburgh	East Lothian	%
Number of Pupils *	2,879	13,230	21.8%
Looked After Pupils (at home) *	23	61	37.7%
Looked After Pupils (away from home) *	26	103	25.2%
Pupils with ASN *	411	1,923	21.4%
Disabled Pupils *	69	189	36.5%
Free School Meal Registration *	433	1,445	30%
Children & Families Social Work Referrals (2010 - 2011) **	685	2,311	30%
Children on Child Protection Register (April 2011) **	15	56	27%
Children under 5 in Foster Care (Nov 2011) **	3	16	19%
Day Carers (2011) **	5	16	31%

* From Primary and Secondary School Pupil Census 2010

** From ELC Children & Families Social work Department

Musselburgh also has higher and rising levels of unemployment amongst its young people.

⁵ The SIMD is a relative index that identifies small area concentrations of multiple deprivation across Scotland using 38 statistics indicators across 7 domains or aspects of deprivation (Employment, Health, Education, skills & trainin, Geographic access to services, Crime & Housing)

⁶ East Lothian Council Education Department

⁷ East Lothian Council Education Department

Total Under 18 year old Unemployment Claimants in Musselburgh Sep 2010 & Sep 2011 ⁸

Ward	September 2010		September 2011		Annual change		
	number	rate	number	rate	number	%cha	rate
Musselburgh Central	101	4.0	110	4.4	9	8.9	0.4
Musselburgh East	95	4.2	126	5.5	31	32.6	1.4
Musselburgh North	96	4.5	116	5.4	20	20.8	0.9
Musselburgh South	66	2.4	73	2.7	7	10.6	0.3
Musselburgh West	65	2.3	80	2.9	15	23.1	0.5
Column Total	423	3.4	505	4.1	82	19.4	0.6

Amenities

Musselburgh has a range of services and resources available to its residents which are highlighted on the map in Appendix 1

There is also considerable wider amenity and green space available in and around Musselburgh (see Appendix 2). Green spaces are the lungs of towns and cities and can contribute greatly to improving people's physical and mental health by providing places for informal recreation - walking, cycling, sitting, socialising and children's play - and breathing spaces to take time out from the stresses of modern life. They bring the countryside into urban areas and make it more accessible. Green space is any vegetated land or water within or adjoining an urban area and includes:

- green corridors like paths, disused railway lines, rivers and canals
- woods, grassed areas, parks, gardens, playing fields, children's play areas, cemeteries and allotments
- countryside immediately adjoining a town which people can access from their homes
- derelict, vacant and contaminated land which has the potential to be transformed

Summary

Musselburgh Cluster covers the communities of Musselburgh, Wallyford and Whitecraig, Carberry, and Old Craighall. This short profile indicates that population health and wellbeing is generally good although there are localised areas of concern where health and other statistics are less positive and of more concern.

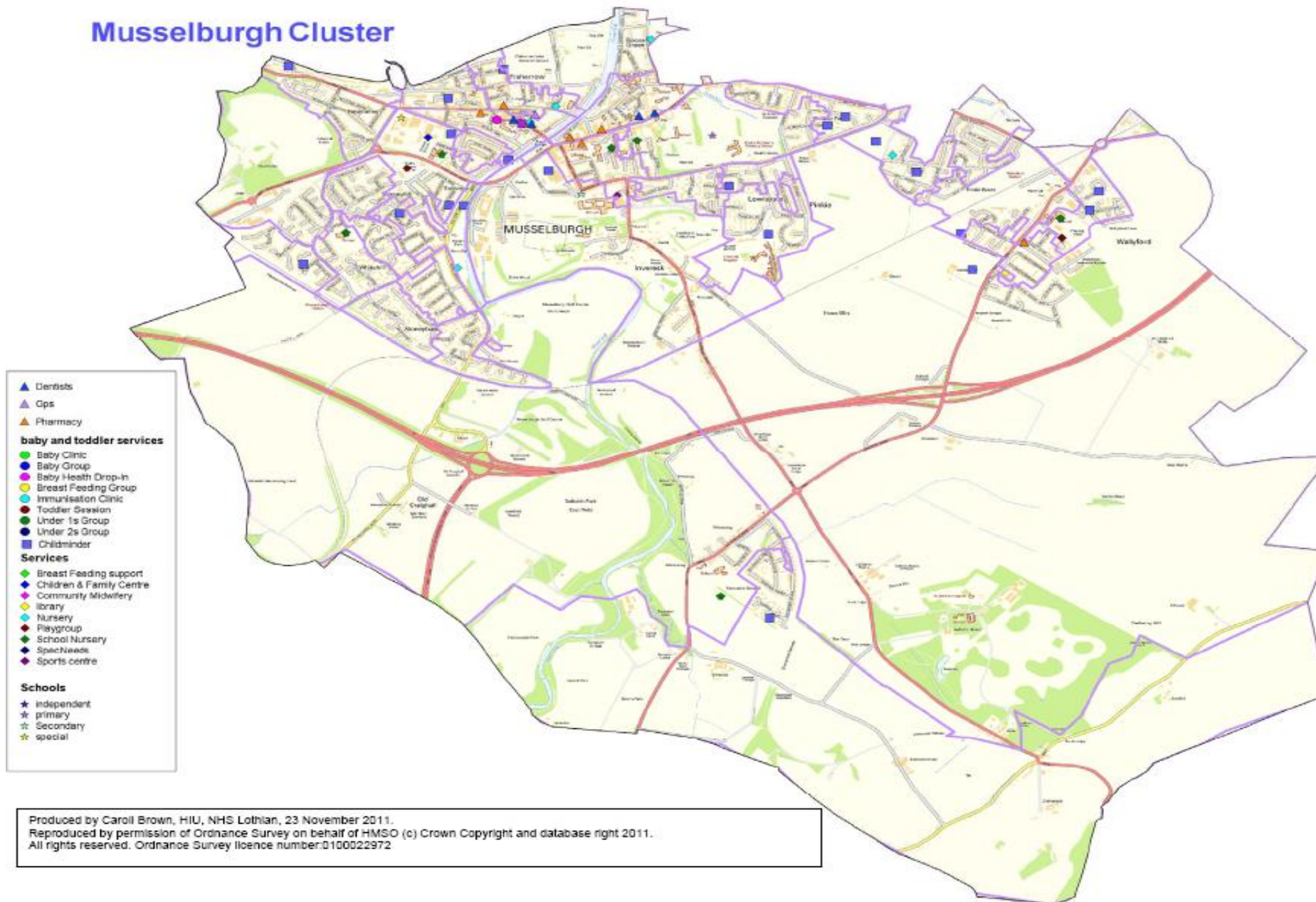
Educationally young people in Musselburgh are well served although there remain challenges in making sure all children get the best out of education. There are also higher numbers of children, with disabilities, children entitled to free school meals, children on the child protection register and young people unable to find employment.

Some of the areas around Musselburgh have considerable higher levels of deprivation than most of Musselburgh itself.

The area is generally quite well served for amenities and green space although there are access issues for some of the smaller communities outwith Musselburgh.

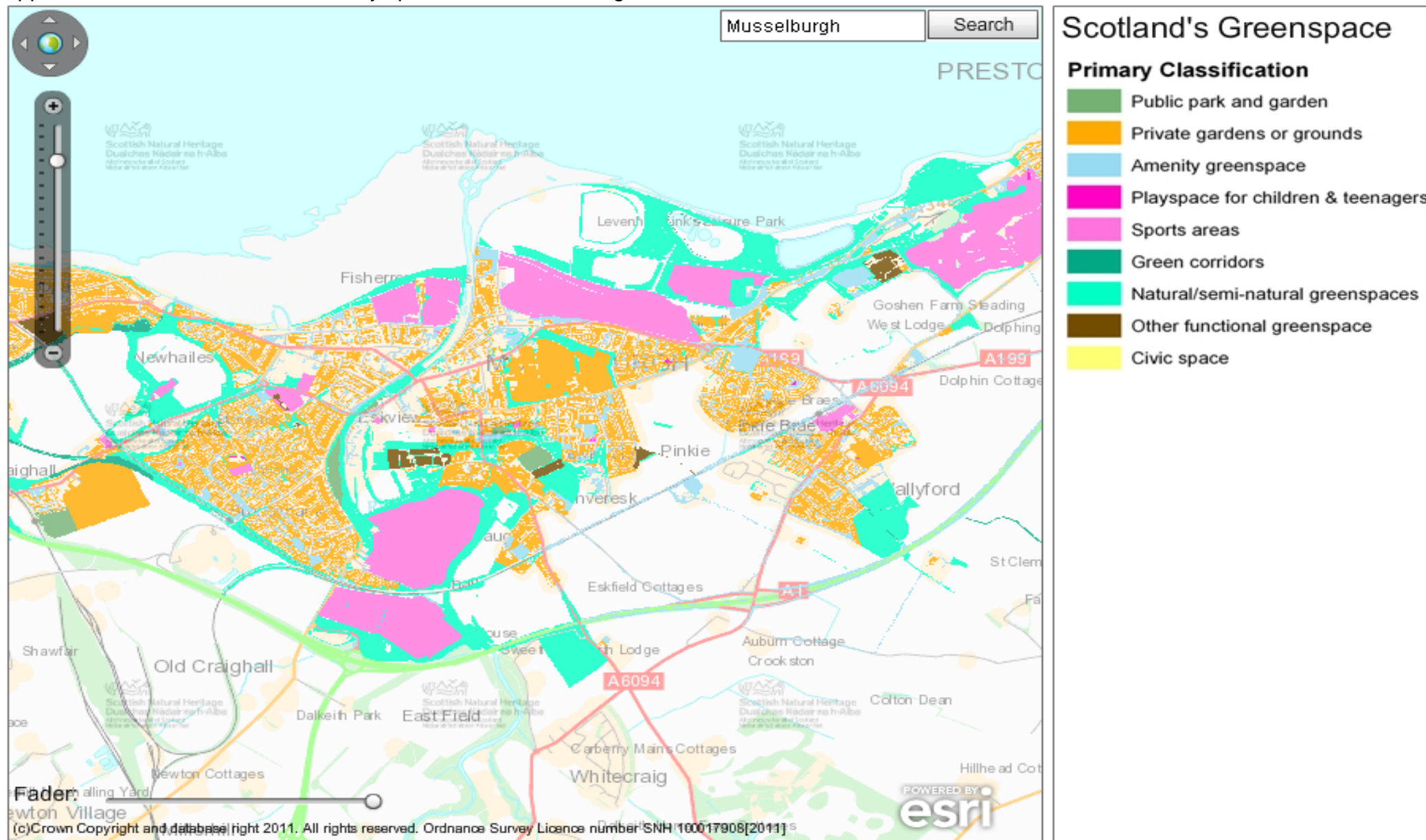
⁸ East Lothian Council Economic Development Department

Musselburgh Cluster



Produced by Carol Brown, HIU, NHS Lothian, 23 November 2011.
 Reproduced by permission of Ordnance Survey on behalf of HMSO (c) Crown Copyright and database right 2011.
 All rights reserved. Ordnance Survey licence number:0100022972

⁹ All schools have access to educational psychology and school nursing services



¹⁰ This maps was taken from Scottish Natural Heritage website (<http://www.snh.gov.uk/planning-and-development/advice-for-planners-and-developers/greenspace-and-outdoor-access/open-space-audits-and-strategies/dataset>) with acknowledgments to Greenspace Scotland (www.greenspacescotland.org.uk)