

NHS Lothian Getting It Right For Every Child (GIRFEC) Newsletter



Welcome to the first edition of the NHS Lothian GIRFEC Newsletter

Issue 1, April 2016

GIRFEC at a Glance:



GIRFEC stands for Getting It Right for Every Child;

GIRFEC puts the best interests of the child or young person at the heart of children and adults' services by;

- ☞ Looking at the whole picture of a child's wellbeing;
- ☞ Building on the strengths and capabilities of the child or young person and their family to improve their wellbeing;
- ☞ Promoting early involvement and support to prevent concerns becoming problems and, wherever possible, reduce the need for greater intrusion to family life or reduce the need for statutory interventions;
- ☞ Building strong health and education services, involving other services if required, to meet the needs of a child or young person and their family.

Want to know more? Do the LearnPro module! Look for the **Lothian Getting it Right for Every Child** module on LearnPro to find out more!

getting
it right
for every child

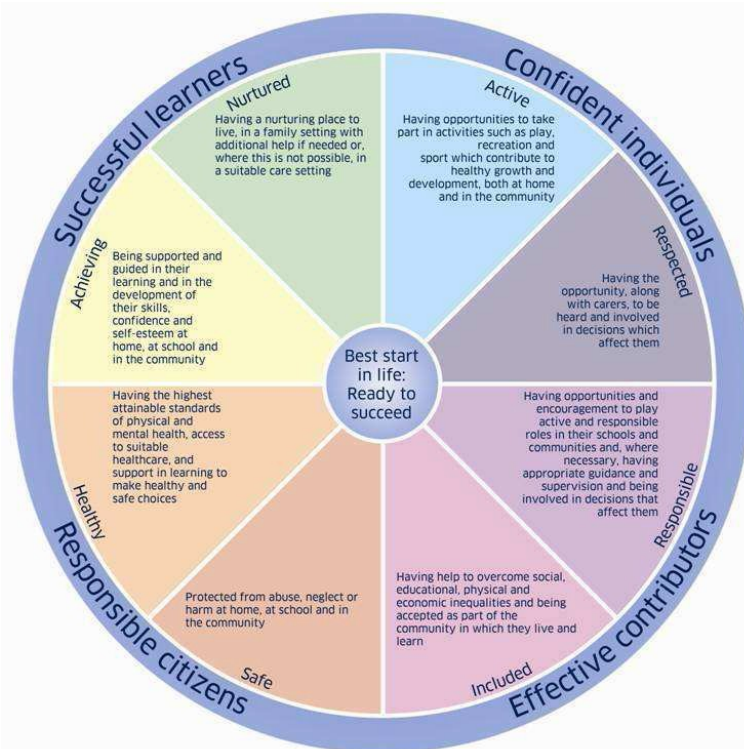
GIRFEC in Lothian:

Getting It Right For Every Child (GIRFEC) is a national policy that underpins NHS Lothian's Strategy for Children and Young People 2014-2020. The Strategy sets out a clear vision, principles and approach for how NHS Lothian will work with children and young people, their families, the public, the third sector and the four local authorities across Lothian to improve the physical and emotional health and wellbeing of children and young people across Lothian.

THE WELLBEING INDICATORS

- ◆ The indicators on the wellbeing wheel (shown opposite) demonstrate the areas NHS Lothian is committed to making a reality for every child.
- ◆ We know we cannot do this alone, which is why we are working with all our partners to implement it.

(The Wellbeing Wheel is used courtesy of the Scottish Government)



THE NAMED PERSON SERVICE

You may have heard the term "Named Person" being talked about in the media, but what is the Named Person service and who will provide it?

WHAT IS A NAMED PERSON?

- ◆ The Named Person service is a key part of the Children and Young People (Scotland) Act
- ◆ All Children and Young people will have access to a Named Person: a single point of contact for help, support and advice if they need it.

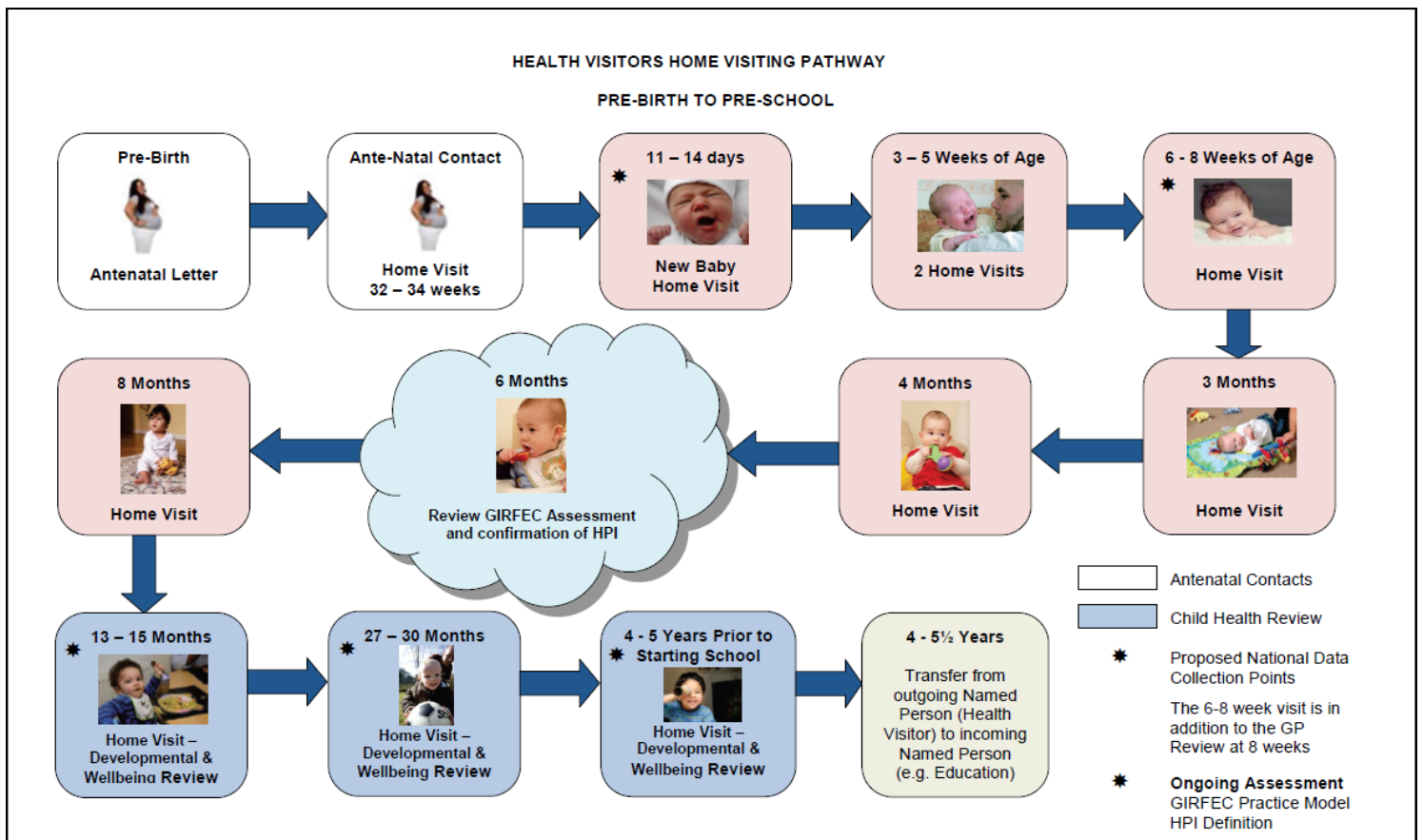
WHO WILL CARRY OUT THE NAMED PERSON FUNCTION?

- ◆ Health Visitors/Family Nurse Partnership (FNP) nurse will usually be the Named Person for pre-school children
- ◆ A teacher (such as a head-teacher or guidance teacher) will usually be the Named Person for school-age children
- ◆ Identifying these professionals as a Named Person means that their organisations will be responsible for providing a Named Person Service and will have a duty to make sure they have the skills and support to enable them to consistently provide advice, information and help when it's needed.

NHS Lothian Getting It Right For Every Child (GIRFEC) Newsletter

UNIVERSAL HEALTH VISITING PATHWAY IN SCOTLAND—PRE-BIRTH TO PRE-SCHOOL

As part of the delivery of the Children and Young People (Scotland) Act 2014 and the GIRFEC policy, a Universal Health Visiting Pathway has been developed to highlight the core service and wider role that Health Visitors play in the early years of a child's life.



THE PATHWAY

The Pathway consists of 11 home visits to all families—eight within the first year of life and three Child Health Reviews between 13 months and 4-5 years.

The Pathway is based on several underlying principles:

- ☞ Promoting, supporting and safeguarding the wellbeing of children
- ☞ Person-centredness
- ☞ Building strong relationships from pregnancy
- ☞ Offering support during the early weeks and planning future contacts with families
- ☞ Focusing on family strengths, while assessing and respectfully responding to their needs.

**getting
it right**
for every child

WHEN WILL THE PATHWAY COMMENCE?

- 🕒 In NHS Lothian, the new pathway will commence for all women having their 1st trimester scan from October 2016, which means that these babies born from April/May 2017 will commence the full pathway of visits. Whilst the pathway is designed for all core contacts and developmental assessments to be done by a Health Visitor, there may be a transitional period whereby some of these contacts are carried out by Nursery Nurses or a Staff Nurse if appropriate
- 🕒 Across Scotland the 13-15 month developmental assessment will commence from May 2017, and NHS Lothian will start at the same point for all babies who turn 13-15 months from that point forward
- 🕒 A NHS Lothian Pathway Steering Group is now established and a detailed project plan is in place. There are team leaders and nurse managers on this group representing both Health Visitors and Family Nurse Partnership, alongside Chief Nurses, the Child Health Commissioner, Staff Partnership and Public Health