



The Royal Highland Education Trust  
Patron HRH The Princess Royal



# RHET Lothian Farmhouse Breakfast Competition 2015

## The Competition

In the build up to Farmhouse Breakfast Week, which runs from 25th—31st January 2015, RHET Lothian is holding a local competition open to all Primary 7 classes in Edinburgh and the Lothians.

We want to encourage people to think about where their breakfast foods come from and support the cereal farmers who produce it.

## To Enter

Your class must design a recipe book featuring a breakfast for each day of the week, plus an illustrated cover.

The design of the book is up to you, but should include suitable recipes for breakfasts from Monday to Sunday.

**The closing date for entries is January 31<sup>st</sup> 2015.**

Please email entries to [lothians@rhet.org](mailto:lothians@rhet.org) or post them to:

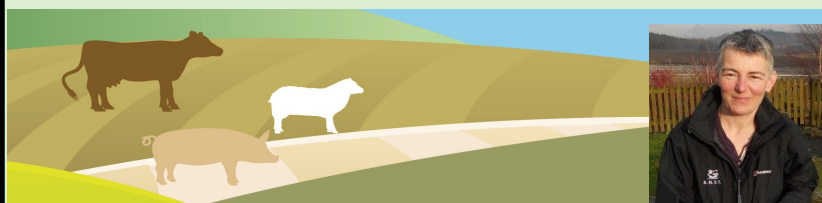
Karen Valentine, Royal Highland Education Trust, Royal Highland Centre, Ingliston Edinburgh EH28 8NB.

## Criteria

Entries will be judged on: the suitability of the recipes e.g. you might choose quicker, easier recipes for a week day; imaginative and original recipes; use of Scottish produce; healthy choices; overall design. And don't forget to tell us *why* you like the recipes you have chosen!

## Prizes

The winning class will receive a free classroom talk and a fantastic Farmhouse Breakfast made with Scottish produce served to your class in school!



**RHET Lothian Contact details:**  
Project Coordinator: Karen Valentine  
Email: [lothians@rhet.org](mailto:lothians@rhet.org)  
Tel: 07541 901 703